



Maitre d'ouvrage



PRÉFÈTE
DE LA SOMME



PRÉFET
DU PAS-DE-CALAIS

Janvier 2022


Étude d'opportunité pour l'élaboration d'un Plan de
Prévention des Risques d'inondation de la vallée de
l'Authie

Commune : SOUASTRE


Version au 28 janvier 2022

Aléa de référence : Cartographie des
vitesses d'écoulement (débordement et
ruissellement)


Maitres d'oeuvre



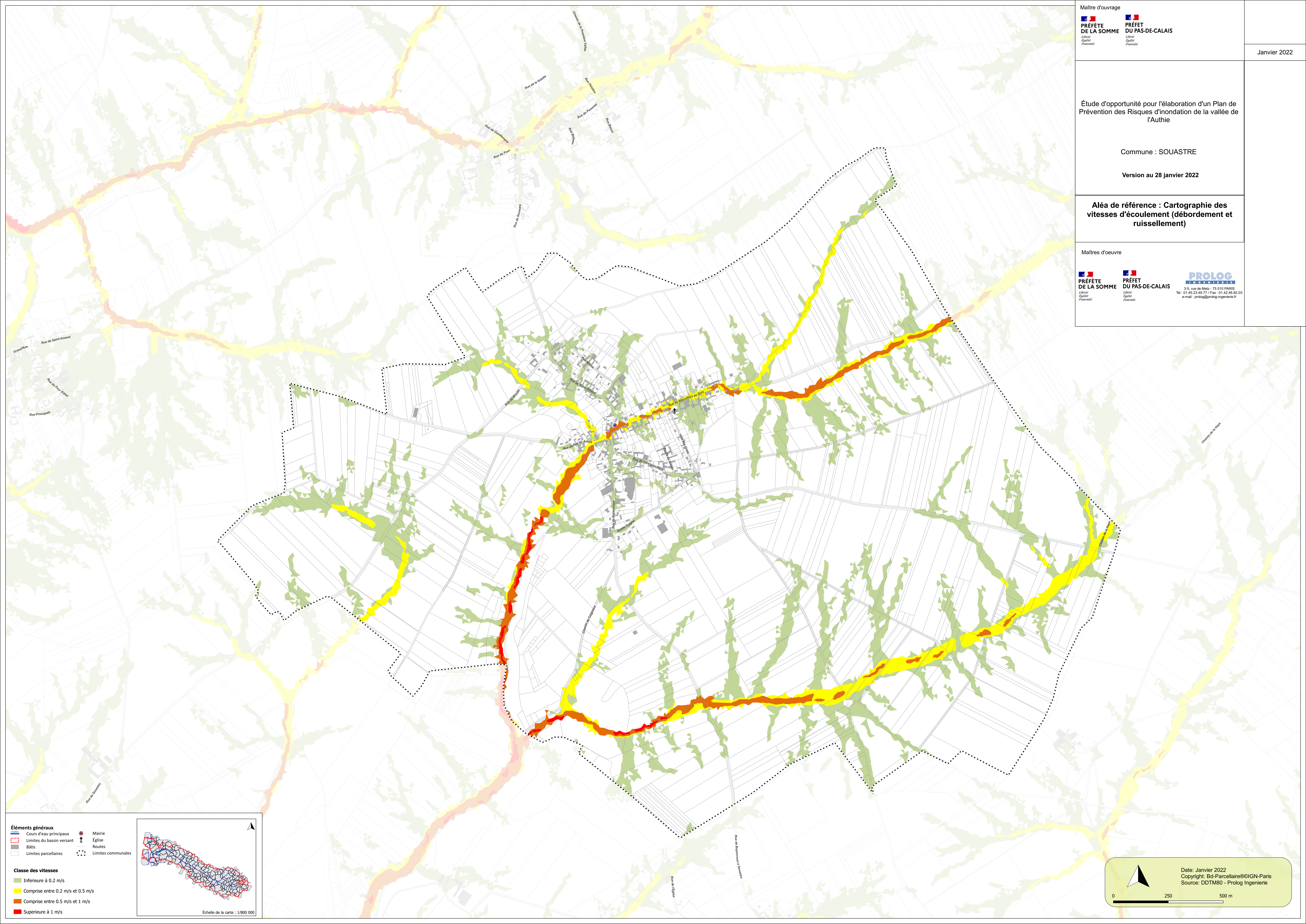
PRÉFÈTE
DE LA SOMME




PRÉFET
DU PAS-DE-CALAIS

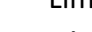


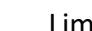
PROLOG
INGÉNIERIE





Éléments généraux


 Cours d'eau principaux


 Limites du bassin versant


 Bâts

 Limites parcellaires


 Mairie


 Église


 Routes


 Limites communales

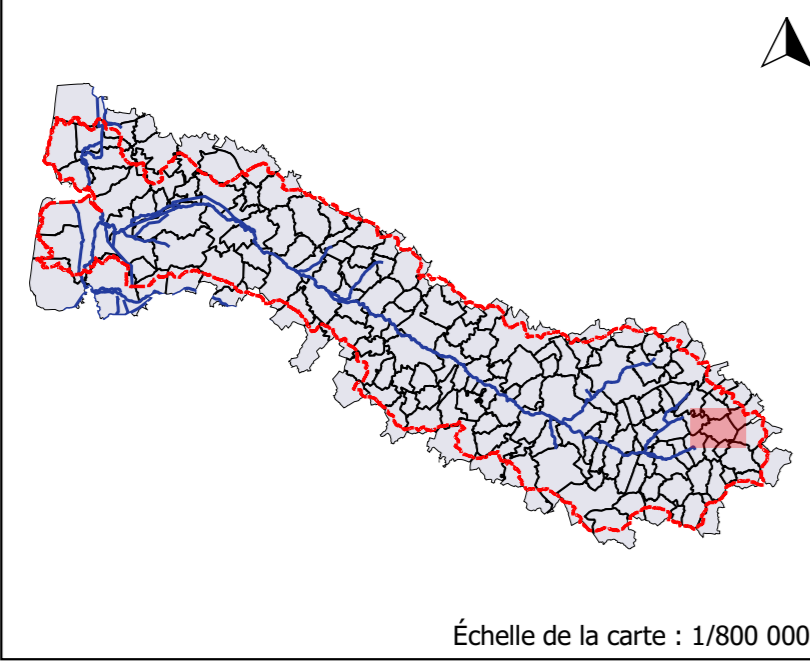
Classe des vitesses

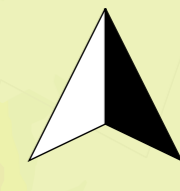
 Inférieure à 0.2 m/s

 Comprise entre 0.2 m/s et 0.5 m/s

 Comprise entre 0.5 m/s et 1 m/s

 Supérieure à 1 m/s





Date: Janvier 2022

Copyright: Bd-Parcellaire©IGN-Paris

Source: DDTM80 - Prolog Ingeniere

0

250

500 m